

Officers

Prabodha Agalawatte	- Scientist/Web
Ranmalee Bandara	- Scientist
Sewwandhi Chandrasekara	- Engineer/ MDP Coordinator
Dumindu Herath	- Scientist
Sanjaya Ratnayake	- Scientist
Erandika Wijekoon	- Economist
Rashid Zubair	- Web
Rimza Zacky	- Accountant
Zeenas Yahiya	- Social Scientist / Manager
Lareef Zubair	- Principal Scientist/Engineer

Advisors

Sarith Mahanama	- Hydro-meteorologist
Vidhura Ralapanawe	- Information Technology
P. Wickramagama	- Geographer
Neil Devadasan	- Systems Engineer
Ruvini Perera	- Hydrologist
Sabry Razick	- Bio-Informatics
Ramany Sritharan	- Agriculture
Zahid Hameed	- Climate Science
Manoharadas Manobavan	- Earth System Science
Nalin Wickramanayake	- Coastal and Water Resources

Alumni of FECT and its Predecessor

Heli Bulathsinhala	- Engineer (2001-2)
C. Wickremasinghe	- Data Entry (2002)
Upamala Tennakoon	- GIS (2002-7)
Kusalika Ariyaratne	- Engineer (2002-3)
Siraj Razik	- IT Engineer (2002-6)
Irugal Bandara	- Scientist (2002-3)
Manjula Siriwardhana	- Engineer (2004-7)
Amal Tilakaratne	- Data Entry (2006-7)
Champika Jayathilaka	- Scientist (2007)
Amila Karunaratne	- Web (2007-8)
Susanthi Liyanaarachchi	- Engineer (2008-9)
Mohamed Nasly	- Scientist (2009-10)
Badra Nawaratne	- Civil Engineer (2006-10)
Yoosuf Ashraj	- Research Assistant (2008-9)
Sanira Tennakoon	- Research Assistant (2008-9)
Chandrika De Silva	- Communications (2010)

About FECT

Vision

To sustain a center of excellence in climate, environmental and information technologies and related areas where quality research is to support sustainable development and advance of technological capacity for societal welfare.

Our Contributions

We have undertaken Climate & Environmental research, implemented climate adaptation projects, developed infrastructure for research and trained over a score of personnel since 1997. To sustain these advances, we instituted the Foundation for Environment, Climate and Technology (FECT) as a non-profit company in 2003. FECT contributes to climate, hydrology, adaptation, information technology, publishing, and engineering for sustainable development. Our charter requires us to work towards societal welfare without private profit..

Institutional Profile

Company Name: Foundation for Environment, Climate and Technology

Registration No: N(A)1148 & GA 56 (from 2008)

Date of Incorporation: 31st December, 2003

Company Secretary: Ralapanawe Associates

Auditor: Anzari & Company

Bankers: Peoples Bank, Hatton National Bank

Further Information

Primary Websites:

<http://www.climate.lk>
<http://www.tropicalclimate.org>
<http://www.recoverlanka.net>

Brochure: Is available at www.climate.lk or on request

10th Anniversary Summary: Is available at www.climate.lk

Catalogue: Is available at www.climate.lk

**Foundation for Environment Climate & Technology,
C/o Mahaweli Authority- H.A.O & M Division,
Digana Village, Rajawella,
20180, Sri Lanka.**

**Phone: +94-81-2376746, +94-81-4922992
E-mail: climate@sltnet.lk, fectsl@gmail.com**

FECT

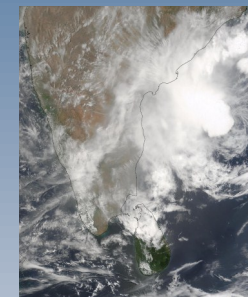
Foundation for Environment, Climate & Technology

**For the Application of Science for Societal
Welfare & Environmental Sustainability**

Climate & Environmental Sciences



CLIMATE & WATER MANAGEMENT

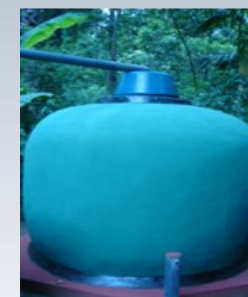


CLIMATE BIBLIOGRAPHY

Climate Adaptation



CLIMATE & TEA



RAIN WATER HARVESTING

Education & Training



INTERNATIONAL TRAINING



DISSEMINATION

Completed Projects



CLIMATE & COASTAL INLETS

Climate Change Impacts on seasonally and Intermittently Open Tidal Inlets (2009-2013): We characterized the seasonal and regional variation of stream flow under climate change forcing for Sri Lanka as provided by CSIRO. Funded by UNESCO - IHE. PI: S. Mahanama.

Assessing drought and enabling adaptation through rain-water harvesting at Idamelanda (2007-9):

We undertook scarcity assessments & climate analysis to support Rain Water Harvesting policy, design and operations in Hanguranketha. Funded by the Provention Consortium.



RAIN WATER HARVESTING

Malaria Risk Mapping and Early Warning Systems (2003-7):

We characterized climate relationships to malaria risk in collaboration with the Anti Malaria Campaign (AMC), IRI, & International Water Management Institute (IWMI). Funded by NOAA.



CLIMATE & MALARIA

Climate Change and Variability and Tea and Coconut Plantations in Sri Lanka (2002-6):

With the Tea and Coconut Research Institutes and the Department of Meteorology, we characterized climate change and assessed its impacts on tea & coconut plantations with contributions from IRI, NRMS, & UoP. This work was supported by the SysTem for Analysis, Research and Training (START) through the Sri Lanka Association for Advancement of Science.



CLIMATE & TEA

Climate Information for Mahaweli Water Resources Management (2000-4, 2008-to date): We develop tools for generation of climate information for water resource management. Since 2008, we provide weekly hydro-meteorological advisories to the MASL supported by IFS, Sweden —see <http://fectsl.blogspot.com>.

Climate and Natural Disaster Risk (2002-5): We identified risks posed by multiple natural hazards (droughts, floods, landslides, cyclones) in Sri Lanka. Funded by the World Bank through the Earth Institute.



CLIMATE & NATURAL DISASTERS



CLIMATE & HUMAN-ELEPHANT CONFLICT

Climate and Human-Elephant Conflict in Sri Lanka (2001-4): With the assistance of MASL, EFCD, & DWLC we identified the influences of climate on human elephant conflict. Funded by the Earth Institute.

Climate Variability and Rice Production in Sri Lanka (2000, 2010):

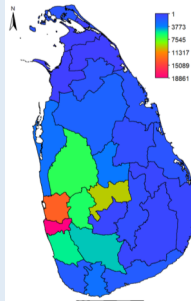
We Investigated the relationship between rice production in Sri Lanka and El Nino; and assessed the impacts on rice production, area, and yield for the project funded by FAO in 2010.



CLIMATE & RICE

Current Projects

Average District Dengue cases 2004-2009

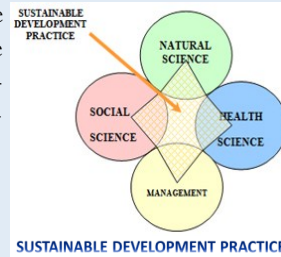


CLIMATE & DENGUE

Regional and Seasonal variation of Dengue Risk in Sri Lanka and its relationship to Climate (2010-2011): Dengue risk in Sri Lanka and its relationship to climate shall be characterized. Funded by WHO - SEARO. PI: Z. Yahiya

Masters in Development Practice (MDP) at the University of Peradeniya (2009-2012): We support curriculum development, teaching, research and field placements for the MDP programme. We also undertake research projects and capacity development in Sri Lanka and Maldives. Funded by MacArthur Foundation.

Toolkit for crop yield forecasting and climate change impact assessment-Rice in Eastern Sri Lanka (20012-4): We are contributing to the Department of Agriculture led project funded by the Climate Change, Agriculture and Food Security (CCAFA) program for work in the Anurhadhapura, Polonnaruwa and Ampara Districts



SUSTAINABLE DEVELOPMENT PRACTICE

Intra-Seasonal Climate Predictions for Sri Lanka and Maldives for Water Management (2012-5): We are developing improved Intra-Seasonal Climate predictions. Sponsored by the US National Academy of Sciences.



CLIMATE & WATER MANAGEMENT

Modeling the impacts of a variable and changing climate on rice and sugarcane agricultural systems in Sri Lanka (20012-4): This project with Universities, Department of Agriculture, Sugarcane Research Institute is sponsored by the Agriculture Model Inter-comparison and Improvement Program. (AgMIP).

Our Staff



Some staff members of FECT

Our staff have skills in Climate and Environmental Sciences, Social Sciences, Information and Communication Technology, Resource Management, Economics, Geography and Engineering. They have implemented projects, published research papers, been trained overseas and mentored other scientists. Pix in 2011 of L-R: Ratnayake, Weerasekera, Yahiya, Chandrasekera, Nawaratna.

Sponsors

Sponsors of our work (directly and through partners) are;

- ◆ Mahaweli Authority of Sri Lanka
- ◆ MacArthur Foundation, Chicago, USA
- ◆ World Health Organization (WHO), Research and Training in Tropical Diseases (TDR)
- ◆ United Nations Education, Science and Cultural Organization (UNESCO)-IHE
- ◆ National Oceanic and Atmospheric Administration (NOAA) - Office of Global Programs
- ◆ World Bank, Hazard Management Unit
- ◆ SysTem for Analysis Research and Training (START)
- ◆ IRI/Earth Institute at Columbia University
- ◆ Food and Agriculture Organization (FAO), Rome and SEARCA, Philippines.
- ◆ Provention Consortium, USA
- ◆ International Foundation for Science (IFS), Sweden.
- ◆ National Academy of Sciences, USA.
- ◆ Maldives Ministry of Environment
- ◆ CCAFS and AgMIP

Our staff have also been supported by the UNDP, IDRC, ICTP, IMD, APN, IMD, APCC, Lamont Doherty Earth Observatory, Beijing Climate Centre, National Science Foundation, Sri Lanka.